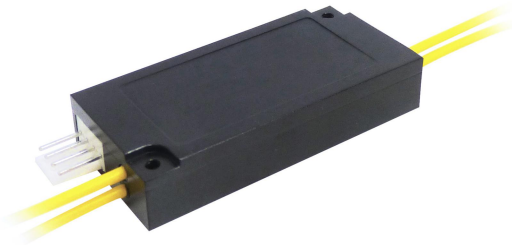


2×2Bypass A Optical Switch



Acfiber-SW-2×2 Bypass A Optical Switch, which is famous for its high performance, low insertion loss and compact dimension. It is an ideal Component for OADM, OXC, system monitor and protection. With compact package, it can be easy to integrate into a high density optical communication system.

Applications

OADM
MAN
System monitor
Component testing

Features

Low Insertion Loss
Wide Wavelength Range
Low Crosstalk
High Stability and High Reliability
Epoxy-free on Optical Path
Latching and Non-latching

Performance

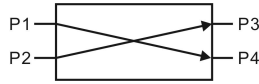
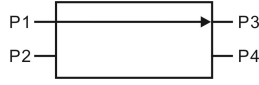
Parameters		Acfiber-SW-2×2BA
Wavelength Range	nm	1260~1625
Operating Wavelength	nm	1310/1550
Insertion Loss	dB	Typ:0.8 Max:1.0
Return Loss	dB	≥50
Crosstalk	dB	≥60
PDL	dB	≤0.05
WDL	dB	≤0.25
TDL	dB	≤0.25
Repeatability	dB	≤±0.02
Power Supply	v	3.0 or 5.0
Lifetime	times	≥10 ⁷
Switch Time	ms	≤8
Transmission Power	mW	≤500
Operating Temperature	°C	-20~+70
Storage Temperature	°C	-40~+85
Weight	g	25
Dimension	mm	(L)55×(W)30×(H)12.8(±0.1~0.2mm) customization is available.

Electric

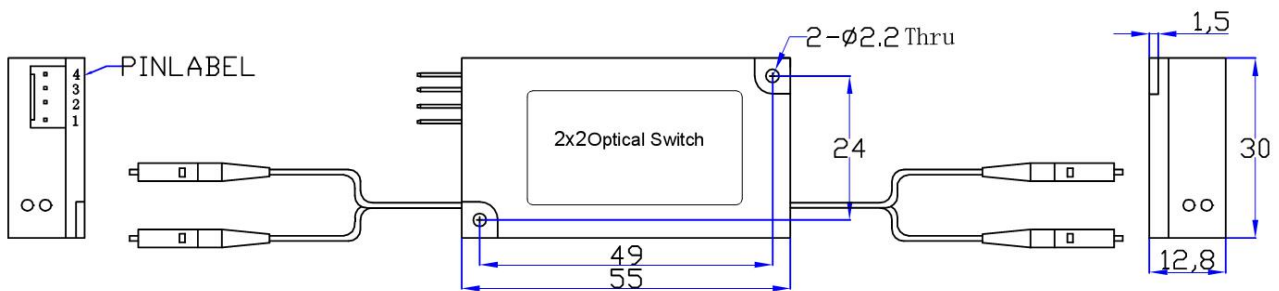
Specification	Voltage	Current	Resistance
5V Latching	4.5~5.5	36~44mA	125 Ω
5V Non-latching	4.5~5.5	26~32mA	175 Ω
3V Latching	2.7~3.3	54~66mA	50 Ω

3V Non-latching	2.7~3.3	39~47mA	70 Ω
-----------------	---------	---------	------

Pins

Control Model	Electric Drive		Status Sensor	Optical Path	
	Pin 1	Pin 2	Pin3- Pin4		
Non-latching	V+	GND	Close	P1-P4、 P2-P3	
	GND	GND	Open	P1-P3	

Dimension



Ordering Information Acfiber-SW—2×2BA-A-B-C-D-E-F-G-H

A	B	C	D	E	F	G	H
Mode	Wavelength	Voltage Type	Control Model	Fiber type	Fiber diameter	Fiber Length	Connector
S:SM M:MM	85: 850nm 13: 1310nm 14: 1490nm 15: 1550nm 16: 1625nm 13/15:1310/1550nm X: Others	3: 3V 5: 5V	L: Latching N: Non- Latching	5:50/125、 6:62.5/125 9: 9/125 X: Others	25:250um 90:900um; 20:2.0mm X: Others	05:0.5m 10:1.0m 15:1.5m X: Others	OO: None FP: FC/PC FA: FC/APC SP: SC/PC SA: SC/APC SP: ST/PC SA: ST/APC LP: LC/PC LA: LC/APC X: Others